



CO
NW
ED



1921

Conwed has spent over 100 years refining the acoustic solution industry, thousands of projects completed around the world, millions of products manufactured.

2018

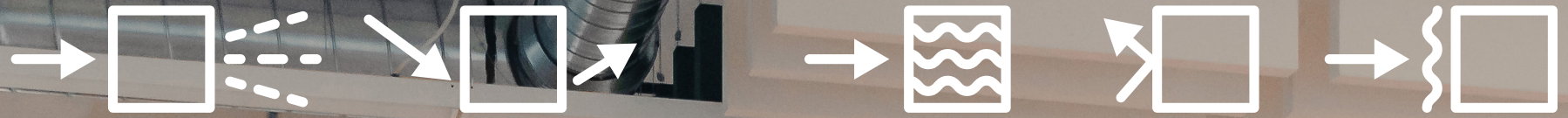
After being bought, sold, and merged with, Conwed is both brand new and just as it was 100 years ago.

Today

Conwed is made from teams that don't come from the acoustics world, but have grown together as experts in it. Automotive engineers, commercial CAD experts, healthcare directors, and more can be found in our building giving a fresh perspective.

We're not trying to reinvent the acoustical wheel here, just making it smoother for everyone.

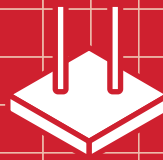
(more than) **a manufacturer**



Good acoustics make the world (and the office) a better place.

Although invisible, sound is felt everywhere. Left unchecked, that sound becomes noise. You've probably been served the wrong food before due to poor acoustics in a restaurant. But at the extremes, bad acoustics can even lead to long-term health effects in places like loud offices or classrooms.

We make acoustic solutions to fit your world.



This is where we come in. Conwed acoustic solutions are made for the architectural interior market. Everything we offer is made-to-order for your project, and made from the same ASTM-rated materials.

Data sheets, Specs, install guides, and more.

conwed.com/resources

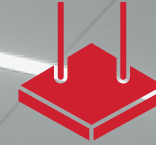
library
school
office
lobby
restaurant
hospital
hotel
arena
ballroom



Panels



Baffles



Clouds



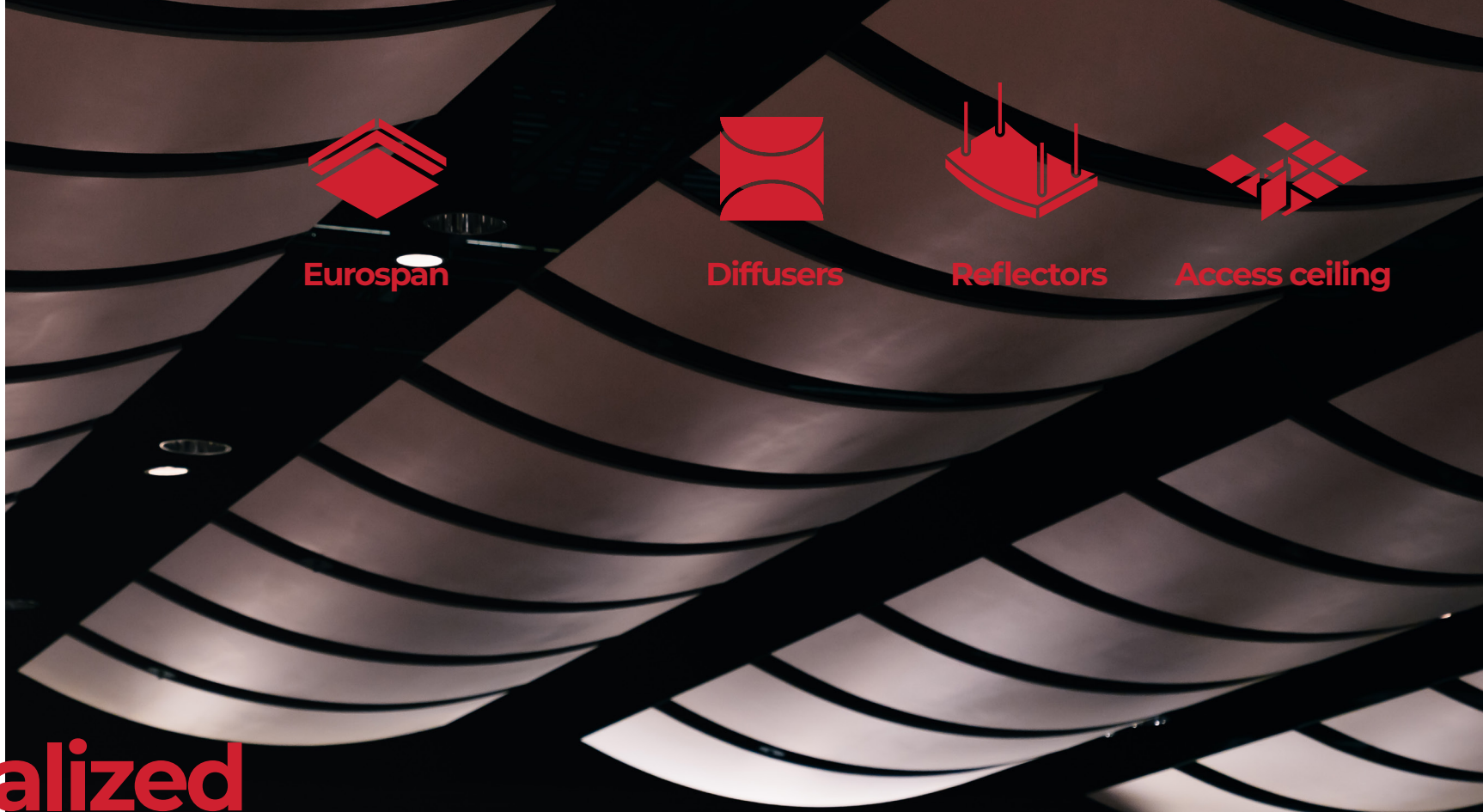
Tiles

Traditional solutions

- ▶ We love a manufacturing challenge, but we can crank out panels, baffles, clouds, and tiles, all day. Whether your project is a wall-mounted mosaic, or you're upgrading an old ceiling grid, we can bring the noise down.

Read more about our traditional solutions in our Core Products Catalog.

conwed.com/catalog



Eurospan

Diffusers

Reflectors

Access ceiling

Specialized solutions

- ▶ The goal of an acoustic solution isn't always absorbing noise. Sometimes blocking, diffusing, or reflecting can be just as important. These specialized acoustic properties are often used in spaces like performance centers, auditoriums, and private rooms.



Absorb

Noise absorption is a product trapping sound waves, preventing reverberation.



Diffuse

Diffusion is scattering a soundwave into multiple directions, ensuring all frequencies are distributed throughout a space.



Reflect

Reflection is bouncing a soundwave back to the source, or redirecting it somewhere else; preventing soundwaves from being trapped in high spaces.



Block

Blocking noise does not quiet the room where the noise is. Rather, it prevents noise from passing through a wall or ceiling, keeping other spaces quiet.

Custom solutions

- ▶ We're weren't joking about being made-to-order. All of our products are highly customizable, and our Eurospan System even more so.

Let's talk about
your next big idea ▶ [419.871.9084](tel:419.871.9084)

Eurospan by Conwed

Ceiling

Wall

Baffle

A system of 3 components that works in virtually any space, that creates seamless acoustical surfaces. Whether it's discrete or jaw-dropping is up to you.
conwed.com/eurospan



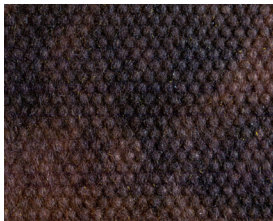
No matter how it's finished, all products are customizable & made from the same quality materials.

6-7# Fiberglass Core



- ▶ Our standard high-performance acoustic core, made ½"-4", & cut any way you like

NAF



- ▶ Same as our standard, but with no-added-formaldehyde acoustic core for LEED-oriented projects.

Hotmelt

- ▶ A manufacturing method produced by Conwed Engineers for a perfect finish-to-core adhesion, for applicable products.

Resin-hardened edges

- ▶ All products come standard with resin-hardened edges for increased durability and handling.

Custom edges



- ▶ To add flair to your projects.

Impact levels



- ▶ Different durabilities are achieved either with the finish itself, or additional material hidden beneath the finish.

A ▶ Standard
IR ▶ Impact-resistant
HI ▶ High-impact

You can tell
a lot about a
person by who
they finish their
products with.

Thousands
of textiles ▶

Carnegie **kvadrat** maharam
Knoll Guilford of Maine DESIGNTEX

Custom & color
matching paint ▶

SHERWIN WILLIAMS

67 copolymer colors &
12 UrbanForest woodgrains ▶

KYDEX





Wall Panel | Fabric | IR ▶ Maritime Aquarium



Eurospan ▶ MBA



Ceiling Panel | Paint | A ▶ YETI Chicago



Clouds | Paint | A ▶ University of Utah



The Montwood project


- We translated 885 unique panels into CAD, and created a barcoding system to track each one through production. We then used that same barcode system to coordinate the installation from across the country.



International Albuquerque Library

- We remotely trained an install crew on our Eurospan System to create massive rounded light wells, and a ribbed zig-zag ceiling.

conwed.com/eurospan

 Eurospan ▶ Training

Get your crew certified
in Eurospan installation.
tdellinger@conwed.com



Let's get your idea started.

CEXP@conwed.com

**Unique products
& solutions**

**Complex orders
& support**

**Product knowledge
& in-person support**

**Finish knowledge
& take-offs**

**Order management
& a personal touch**

Tom Dellinger
Technical Director/
Eurospan Program
Manager

Amy Parsh
Director of Customer
Experience

Garshawn Paynther
Project Manager

Russell Leighton
Director of Sales

Conwed Sales Reps
North American &
International Support

Toni Callan
Estimator/Designer

Brent Bloomfield
Estimator

Emma Butler
CEXP & Sample
Coordinator

Leigh Johnson
CEXP Associate



