



Lookbook 01 ▶ Finishes



Lookbook 01

▶ Finishes



Finishes 01

Sounds Good Vol. 01



Enjoy some hand-picked tunes while you browse.

Copyright © 2024 Conwed. All rights reserved.
This catalog, including all text, images, illustrations, graphics, photographs, product descriptions, and design elements, is protected by copyright law and international treaties. No part of this catalog may be reproduced, distributed, or transmitted in any form or by any means, including photocopying, recording, or other electronic or mechanical methods, without the prior written permission of the Copyright Owner.
All product names, trademarks, and service marks mentioned in this catalog are the property of their respective owners and are used for identification purposes only.
Date of last revision: 10.24.2023

Table of contents

What are finishes?	06	Chicago Parks Department	26
Fabric	08	Montwood	32
Paint	12	West Governor University	40
Print	16	Hillside School	49
Copolymer	20	More than a manufacturer	54

Icon glossary



Fabric



Paint



Print



Copolymer



Panels



Clouds



Baffles



Eurospan Ceiling



Ceiling panel



Standard
durability



Impact-
resistant



High
impact

What are finishes?

Fabric

Tackable
1000+ options
Carnegie
DESIGNTEX
maharam
kvadrat
Knoll
Guilford of Maine

Paint

Factory-applied
Color-matching
*SHERWIN
WILLIAMS.*

Print

Fully custom
300dpi

Copolymer

Highly durable
Colors & wood grains
KYDEX

The outermost layer of a final product, made to your specification. Our finishes, while vast, can break up into four categories.

Product identification

You'll notice simpler labels alongside the older product names you may have heard before. No matter what product name you submit in a spec though, we'll handle it.

Respond A, IR, HI ▶ [Fabric A, IR, HI](#)

New Dimensions ▶ [Paint](#)

Foundations ▶ [Unpainted](#)

Metro Rebound ▶ [Copolymer](#)

Acoustic Art ▶ [Print](#)



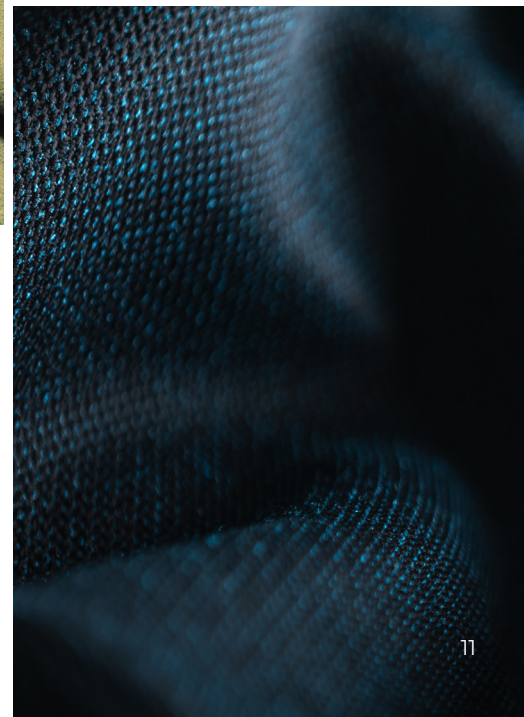
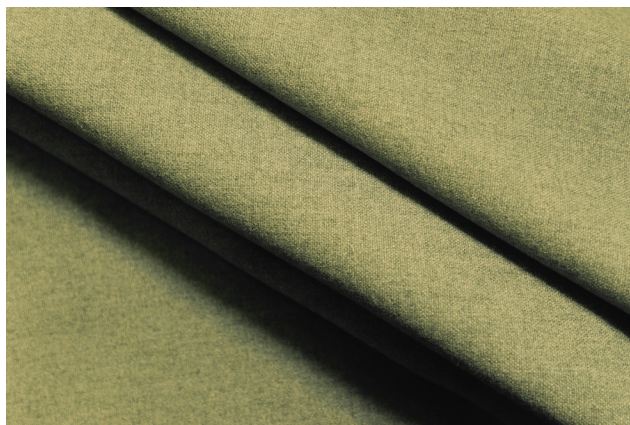
Fabrics

Carnegie DESIGNTEX maharam kvadrat Knoll Guilford of Maine

We partner with the top textile suppliers so that your panels can match your mood boards.



**Need to see something for yourself?
contact cexp@conwed.com for all
your sampling needs.**



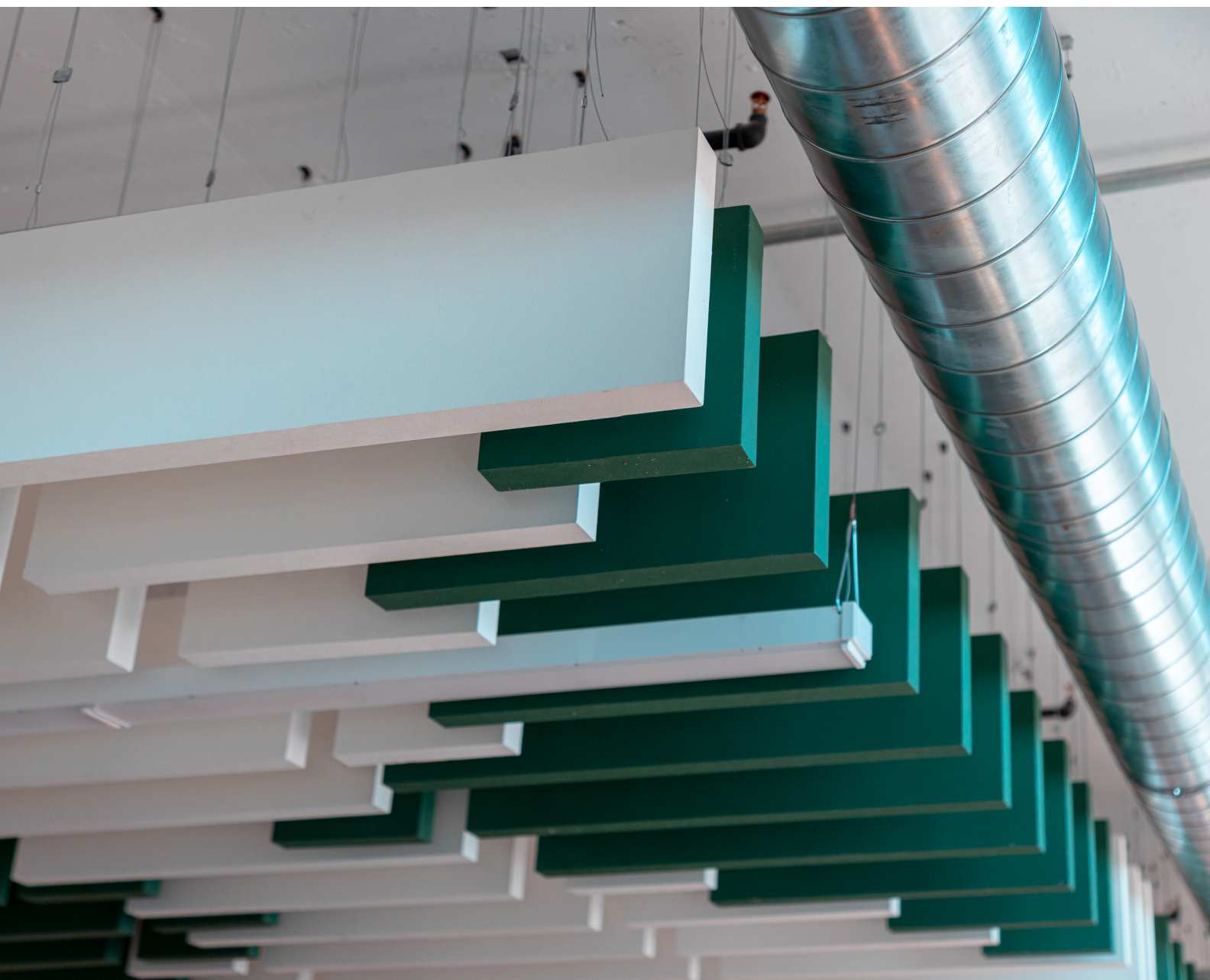


Paint



*SHERWIN
WILLIAMS®*

Working with Sherwin Williams allows us to paint your projects however you want, whether that be a trending color, or color-matching your company logo.

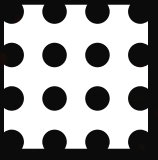




Print

Give your acoustic solution a truly unique look by recreating a work of art, adding your company's logo, or using larger images spread over several panels to create a panoramic display.





Copolymer

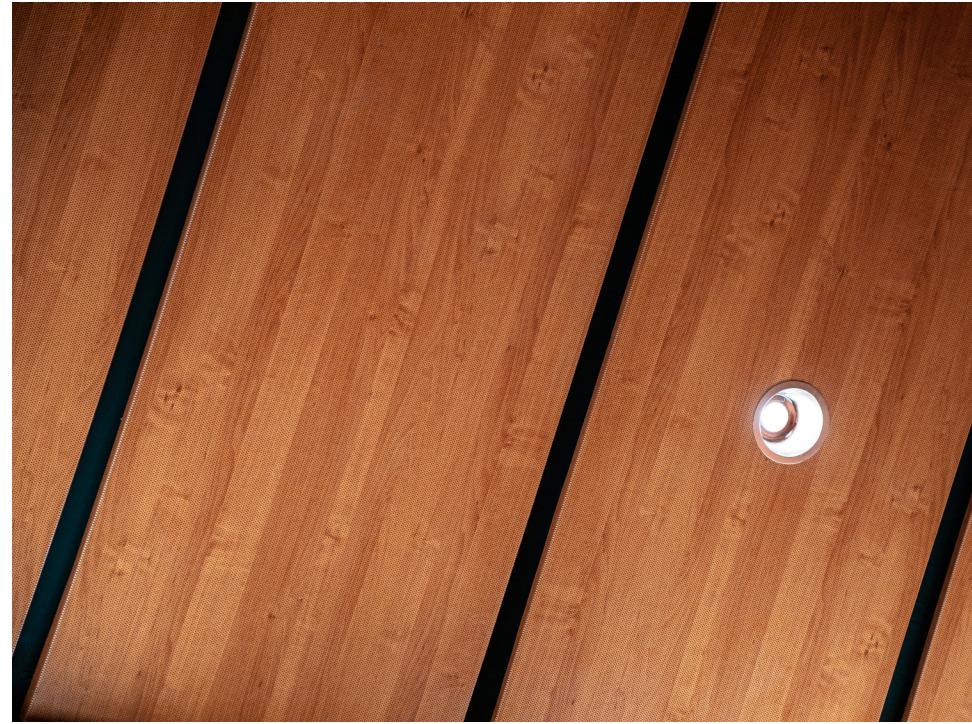
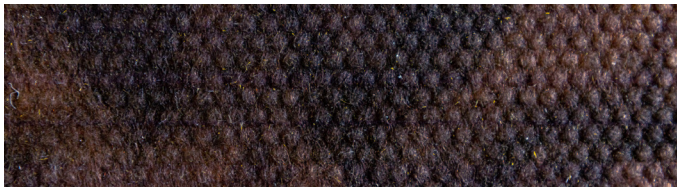
KYDEX

Get a custom color, make it a woodgrain, or use it as a backboard. Copolymer can do it all.



**The perforations go great with our
LEED-friendly NAF core.**

NAF ►



Now let's see them in action.

Here are some recent examples of each finish looking its best.
See more of our work at conwed.com.

Chicago Parks Department

Eurospan | Ceiling
Eurospan track
Back-lit Prime White

Montwood Highschool

Wall panels | Fabric | A & IR
Impaling Clips
Maharam Messenger
094, 095, 046

West Governor University

Clouds | Paint
Acoustical Cloud Anchor
Custom color & cut for fixtures

Hillside School

Ceiling panels | Copolymer
Z-bar to z-bar
UrbanForest Summer Flame



Chicago Parks Department

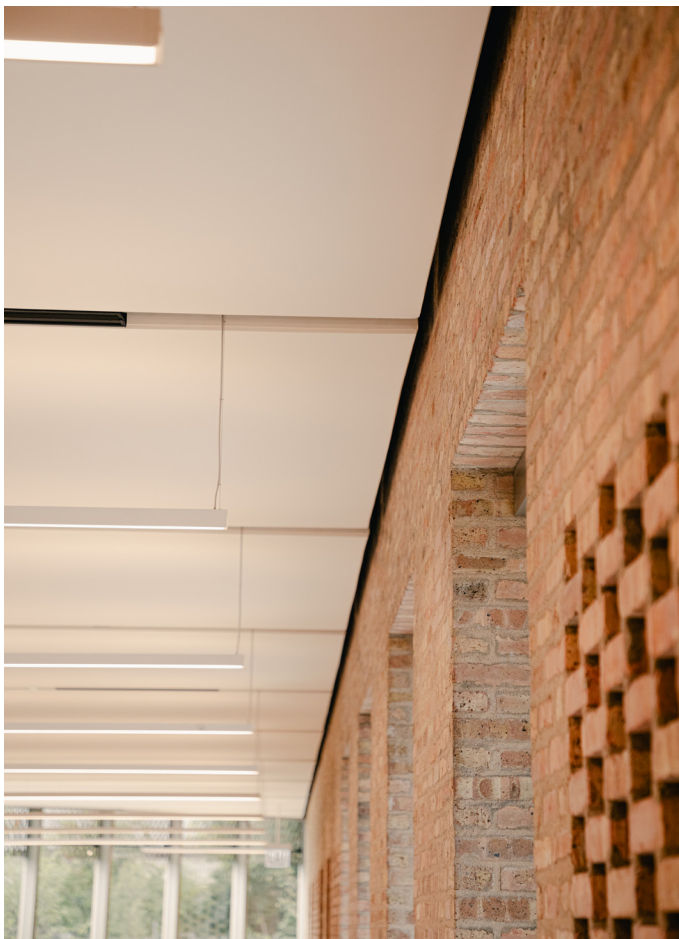


Product ▶ Eurospan Ceiling
Finish ▶ Back-lit Prime White
Mounting ▶ Eurospan Track



Eurospan was used to make it all happen.

Back-lit sections created a massive light well above the entry stairs, and seamless acoustic ceilings with room for fixtures and skylights were spread throughout the workspaces.



- Eurospan is a stretch-fabric acoustic solution that can create massive discrete acoustic surfaces, or be used to make the centerpiece of a space.
conwed.com/eurospan.





To keep the focus on reused bricks from historical Chicago buildings, this project's acoustic ceiling was kept minimal and clean using Prime White.

Prime White is one color of Eurospan Prime, an ideal stretch-acoustic fabric designed in-house by Conwed engineers.

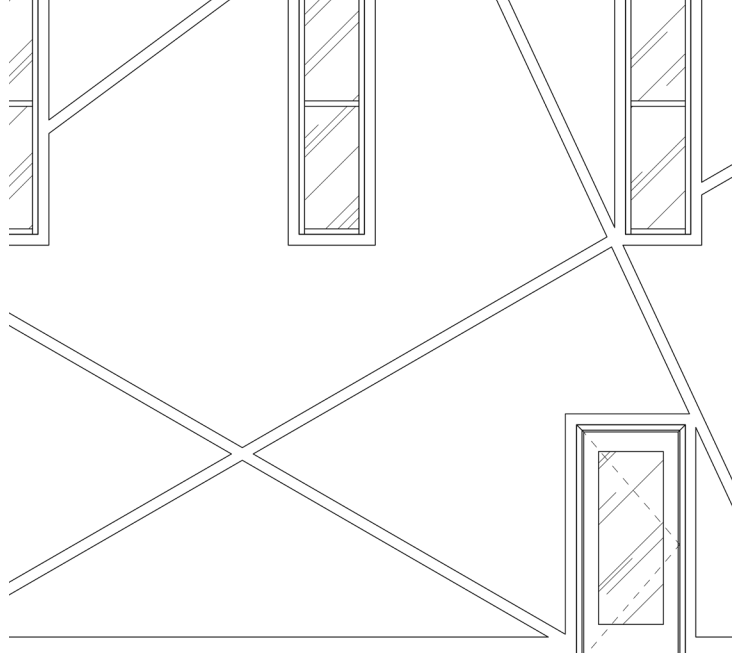




- Product** ▶ Wall panels | Fabric A & IR
(Respond)
- Finish** ▶ Maharam Messenger
094, 095, 046
- Mounting** ▶ Impaling clips

Montwood





Perfect from idea to install.

We were given CAD files of the first iteration of plans and translated them into the ideal amount of custom-shaped panels for the project.





**We created a
barcode system.**

Every panel was scanned and monitored through the production process to ensure the deliverables were exactly as specified. Until then, we had no need for tracking projects this way, now it's the standard.

Installation was coordinated across the country using the barcode system and handled by our CEXP team. 885 unique panels were made for this project, and each stuck the landing in a perfect install.





West Governor University



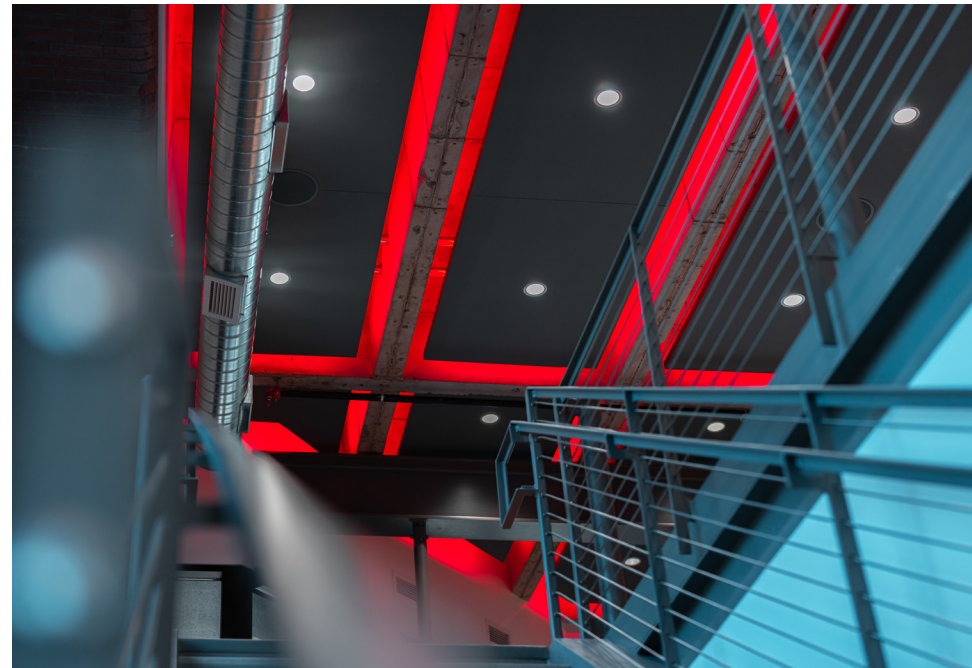
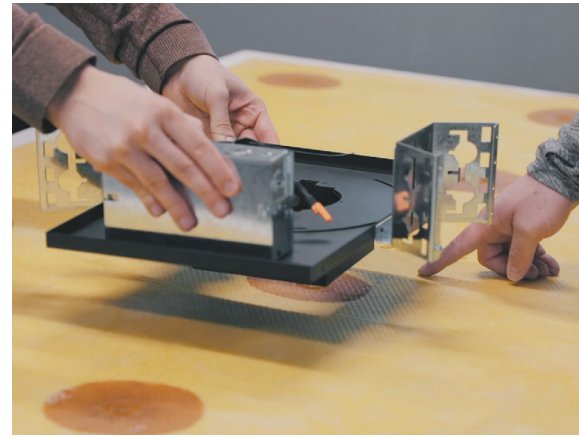
- Product** ▶ Clouds | Paint | A (New Dimensions)
- Finish** ▶ Custom paint color WGU Grey
- Mounting** ▶ Acoustical cloud anchors

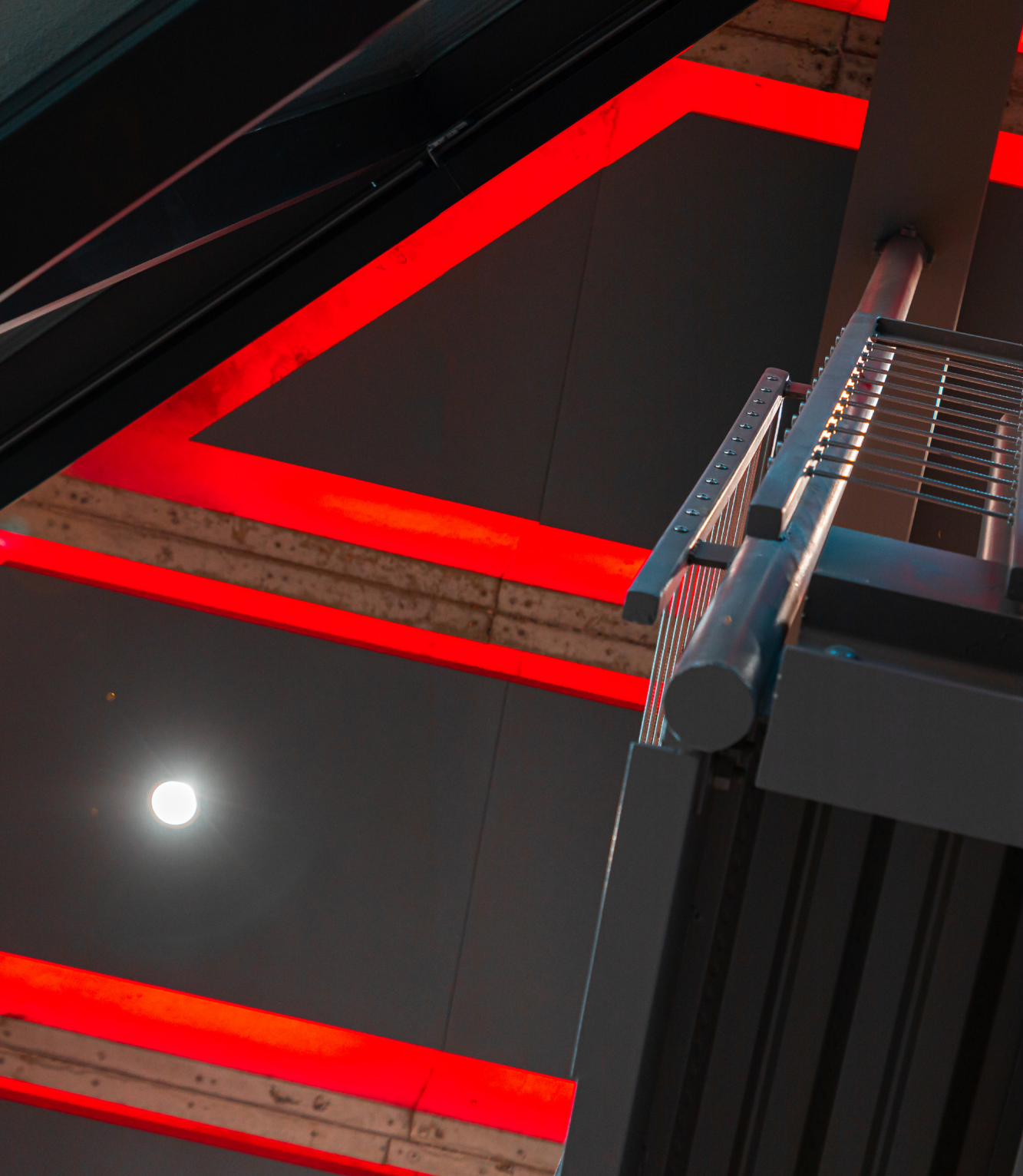


Conwed clouds were chosen for this renovation for their structural strength, the custom paint was a bonus.



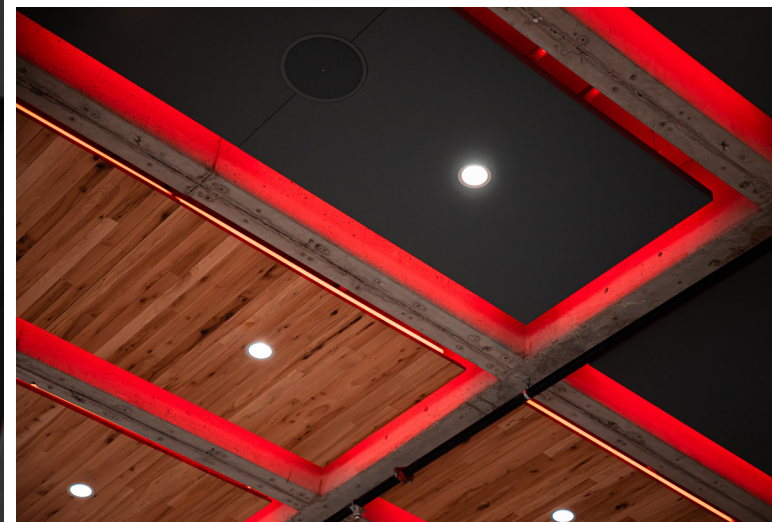
Each cloud was perforated to accommodate can lights, suspended lights, and a 14" speaker. Hidden atop the cloud, electronics for the speakers, and RGB lights we mounted directly to the acoustic core.





**Watch the light show
come together.**

[conwed.com/major-upgrades-at-wgu.](http://conwed.com/major-upgrades-at-wgu)





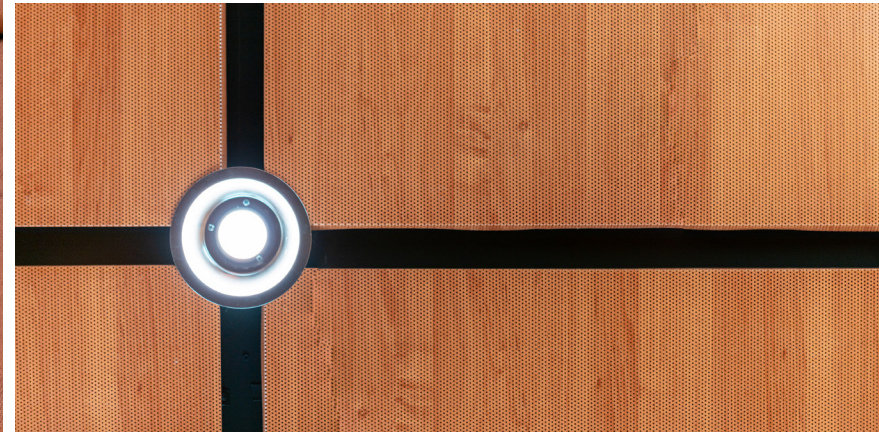
Hillside school



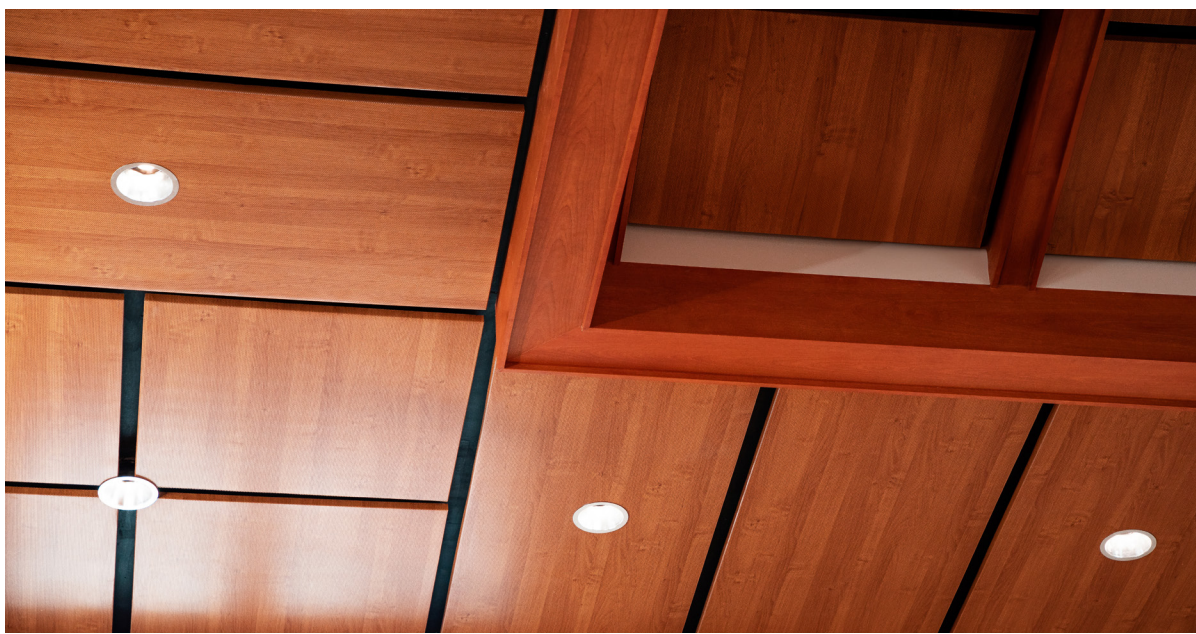
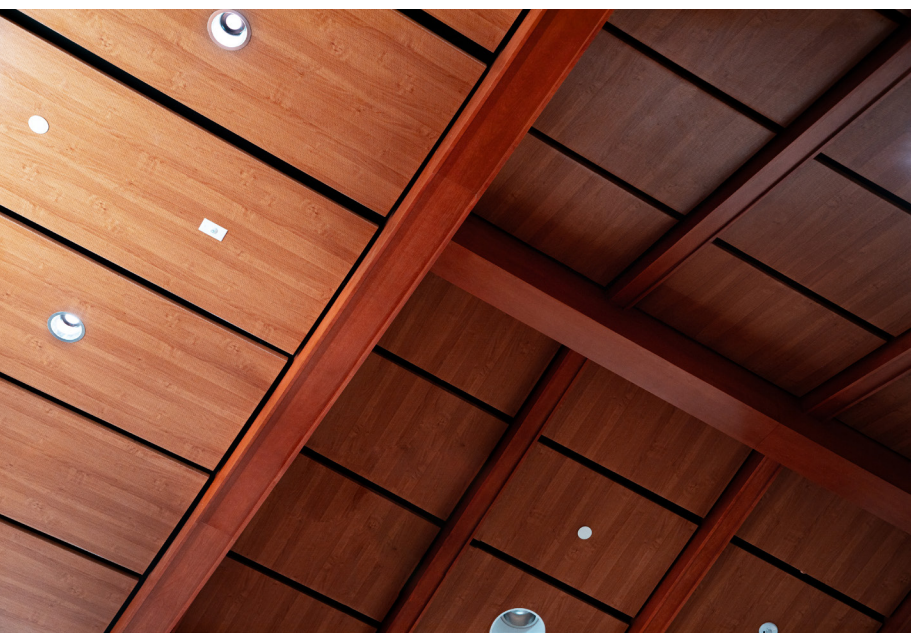
Product ▶ Ceiling Panel | Copolymer
(Metro Rebound)

Finish ▶ UrbanForest Summer Flame

Mounting ▶ Z-bar to z-bar



Hillside had a massive common space, and music room that needed a lot of acoustical treatment. They didn't want a typical fabric panel though. So, we showed them our UrbanForest Collection.



We work to make any idea possible.

Unique products
& solutions

Complex orders
& installation

Custom-cut
products & layouts

Finding the right
finish & designs

Tom Dellinger
Technical Director /
Eurospan Program
Manager

Amy Parsh
Director of Customer
Experience

Garshawn Paynther
Project Manager

Ela Cohen
Architectural
Acoustics Designer

Toni Callan
Estimator/Designer

Get your idea started
by contacting
CEXP@conwed.com



