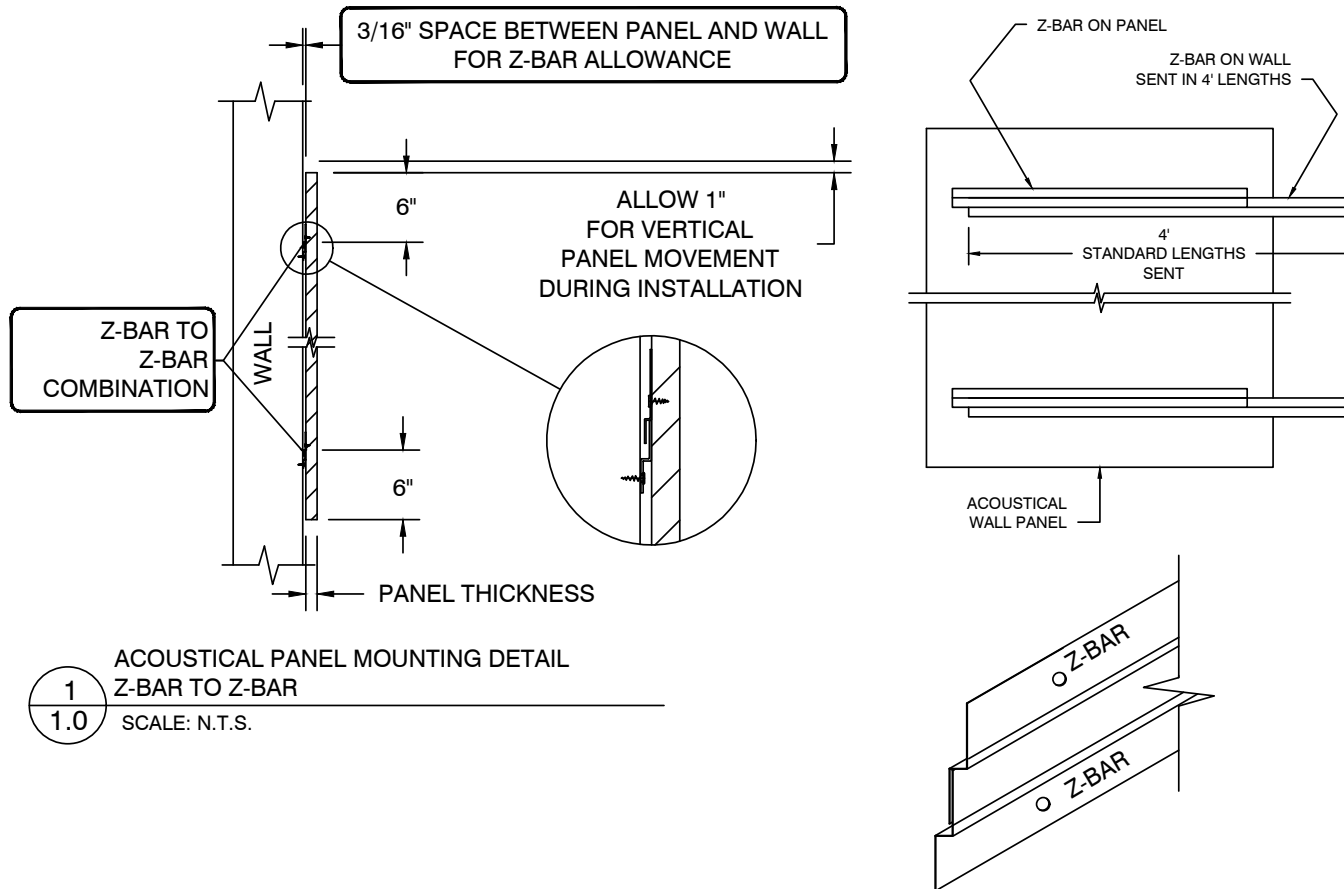


THIS DRAWING AND ALL INFORMATION CONTAINED HEREIN IS AND REMAINS THE PROPERTY OF CONWED AND IS CONFIDENTIAL. IT IS SUBMITTED AND MAY BE USED ONLY IN CONNECTION WITH CONWED PROPOSAL AND/OR ITS CUSTOMERS' ORDERS. IT SHALL NOT BE DISCLOSED TO OTHERS OR COPIED WITHOUT CONWED SPECIFIC WRITTEN CONSENT AND SHALL BE IMMEDIATELY RETURNED UPON REQUEST.



NOTES:
1. NUMBER OF Z-BARS DETERMINED BY FINAL SIZE OF PANELS.



CONWED

1445 Holland Road, Maumee, OH 443537
phone: 419.866.7705 - fax: 419.386.2683
www.conwed.com

TITLE:
Z- Bar to Z-Bar Combination

DWG NO.

DRAWN BY
CAB

SHEET
1 OF 1

SCALE
N.T.S.

DATE: **05/21/20**