

EXCELLENT ACOUSTICAL PERFORMANCE

SelectSound® Black acoustic board provides excellent acoustical performance for multiplex theaters, sound studios and performing arts centers.

DURABLE MATERIAL COMPOSITION

SelectSound® Black acoustic board is dimensionally stable and will not shrink or warp. The board's resilient composition resists job-site damage. When necessary, the durable black mat facing may be cleaned by vacuuming. SelectSound® Black acoustic board, composed of inorganic glass fibers, will not rot or mildew and is noncorrosive to steel, copper and aluminum.

FAST, HIGH QUALITY INSTALLATION

Lightweight and resilient, SelectSound® Black acoustic board is easy to handle, fabricate and install. Both stick pins and adhesives can be used to secure boards to drywall, concrete block or precast concrete.

SIZE AVAILABILITY

SelectSound® Black acoustic board is available in 48" x 96" size. It can also be pre-cut in custom sizes to improve productivity and speed installation.

BLACK CORE WITH DARK BLACK FINISH SURFACE

SelectSound® Black acoustic board has a gray/black fiber glass core with a black mat finish that provides low light reflectivity. The black surface is ideal for eliminating screen light reflections and preventing insulation from showing through most surface treatments.

DESIGN CONSIDERATIONS

Acoustical performance of interior surfaces can generally be improved by increasing acoustical material thickness.

SelectSound® Black acoustic board can be specified for use in conjunction with other Conwed Designscape acoustical materials to provide additional performance.

Conwed Designscape also manufactures SelectSound® Black acoustic blanket. This roll product is ideal for use behind fabric on theater walls, in sound studios and performing arts centers.

APPLICABLE STANDARDS

The 1.10 noise reduction coefficients of a 2" SelectSound® Black acoustic board was derived from tests conducted in accordance with ASTM C 423 procedures by a NVLAP accredited laboratory.

PHYSICAL PROPERTIES

Property	Test Method	Value
Compressive Strength (minimum) at 10% deformation at 25% deformation	ASTM C 165	25 lb./ft. ² (1,197 Pa) 90 lb./ft. ² (4,309 Pa)
Water Vapor Sorption (by weight)	ASTM C 1104	<3% by weight at 120°F (49°C), 95% R.H.
Fungi Resistance	ASTM C 1338	Meets Requirement
Nominal Density	ASTM C 303	3.0 pcf (48 kg/m ³)
Corrosiveness	ASTM C 665 Corrosiveness Test	Will not cause corrosion greater than that caused by sterile cotton on aluminum or steel ¹
Surface Burning Characteristics Flame Spread Smoke Developed	ASTM E 84 CAN/ULC-S102 ²	25 ² 50

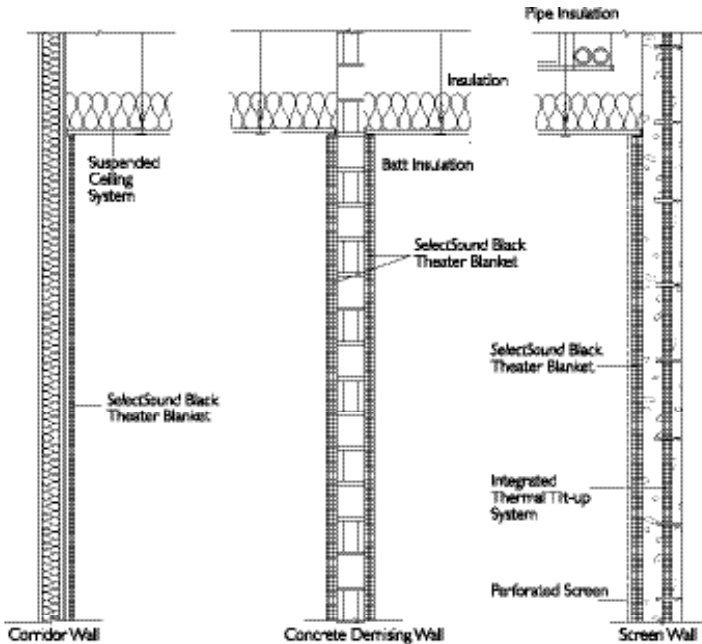
¹When wet, coated surfaces in contact with galvanized steel may cause discoloration of the sheet metal.

²The surface burning characteristics of these products have been determined in accordance with UL 723 and CAN/ULC-S102-M. These standards should be used to measure and describe the properties of materials, products or assemblies in response to heat and flame under controlled laboratory conditions and should not be used to describe or appraise the fire hazard or fire risk of materials, products or assemblies under actual fire conditions. However, results of this test may be used as elements of a fire risk assessment which takes into account all of the factors which are pertinent to an assessment of the fire hazard of a particular end use. Values are reported to the nearest ⁵ rating.

INSTALLATION PROCEDURE

SelectSound® Black acoustic board can be installed on drywall, concrete block or precast concrete using impaling pins or appropriate adhesives.

CONCEPTUAL DETAILS



For CSI type sample specification, please contact your local Conwed Designscape representative.

ENVIRONMENTAL AND SUSTAINABILITY

Conwed Designscape is a worldwide leader in building material systems, insulation and composite solutions, delivering a broad range of high-quality products and services. Conwed Designscape is committed to driving sustainability by delivering solutions, transforming markets and enhancing lives. More information can be found at www.conweddesignscape.com.

NOTES

For additional information, refer to the Safe Use Instruction Sheet (SUIS) found in the SDS Database via www.conweddesignscape.com.

**Thank you for choosing Conwed Designscape®
for your acoustical needs.**

The information provided above is correct to the best of our knowledge at time of printing. We reserve the right to make changes without prior notification.

DISCLAIMER OF LIABILITY

Technical information contained herein is furnished without charge or obligation and is given and accepted at recipient's sole risk. Because conditions of use may vary and are beyond our control, Conwed Designscape makes no representation about, and is not responsible or liable for the accuracy or reliability of data associated with particular uses of any product described herein.

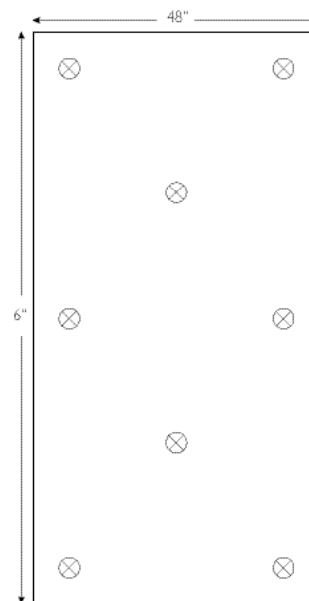
AVAILABILITY & ACOUSTIC PERFORMANCE

Mounting A

Product Type and Thickness	Density		Octave Band Frequencies, Hz.							Thermal Resistance ¹ R-Value (hr-ft ² -°F) /Btu
	pcf	kg/m ³	125	250	500	1000	2000	4000	NRC	
1" Mat Faced	3.0	48	0.06	0.25	0.62	0.91	0.99	0.98	0.70	4.3
2" Mat Faced	3.0	48	0.18	0.71	1.12	1.12	1.03	1.02	1.00	8.6

¹Derived from test conducted in accordance with ASTM C 423. Type A mounting (material placed against a solid backing such as a block wall)

SUGGESTED FASTENER LOCATIONS



Fasteners should be a minimum of 3" from edge.



Conwed Designscape
1445 Holland Rd.
Maumee OH, 43537
419-871-9085
www.conwed.com

©2018 Conwed Designscape
LEED is a registered trademark
of U.S. Green Building Council