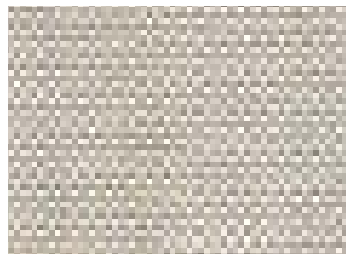


Carnegie Xorel®



Limestone

6107 - 2



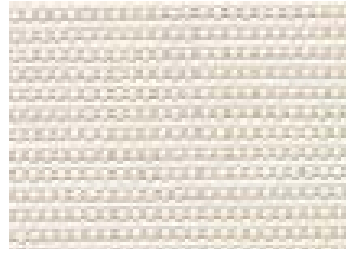
Sahara
Matte

6089 - 609



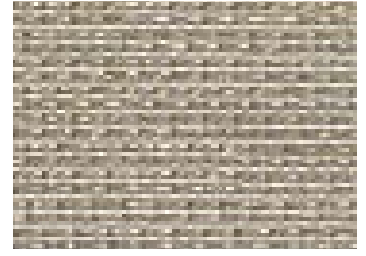
Spire

6269 - 17 📦



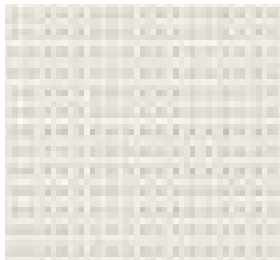
Meteor

6427 - 706



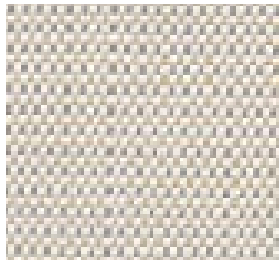
Spire

6269 - 15 📦



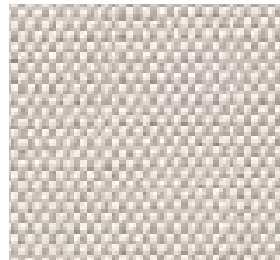
Sahara
Matte

6089 - 603



Meteor

6427 - 765



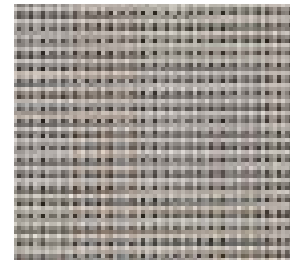
Meteor

6427 - 753



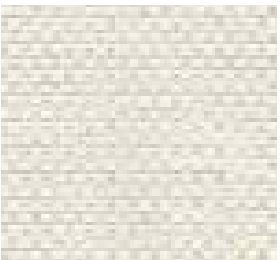
Meteor

6427 - 766



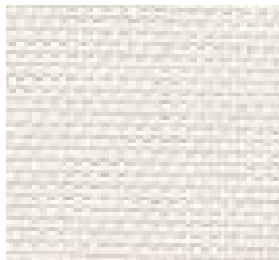
Mojave
Matte

6091 - 501



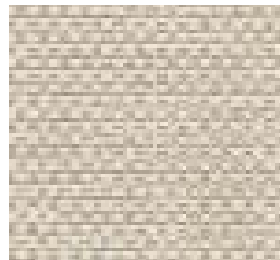
Strie

6423 - 820 📦



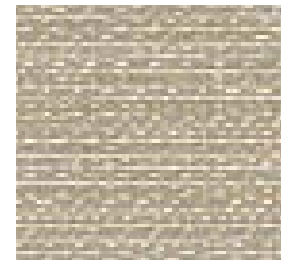
Meteor

6427 - 705 📦



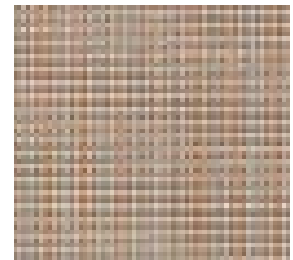
Strie

6423 - 819 📦



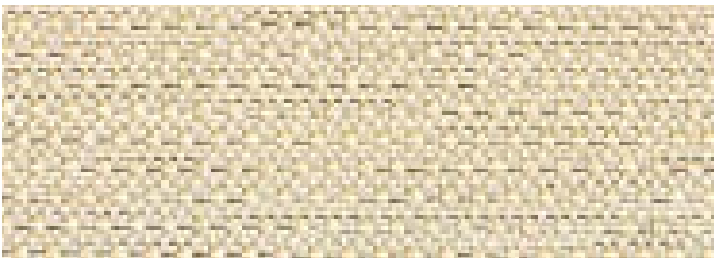
Spire

6269 - 14 📦



Mojave
Matte

6091 - 500



Spire

6269 - 13 📦



Linen

6291 - 8 📦



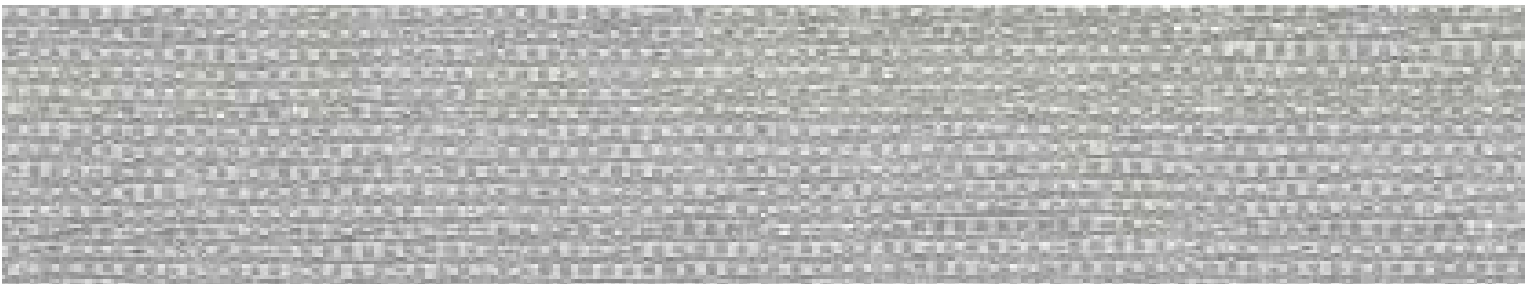
Nexus

6425 - 907 📦




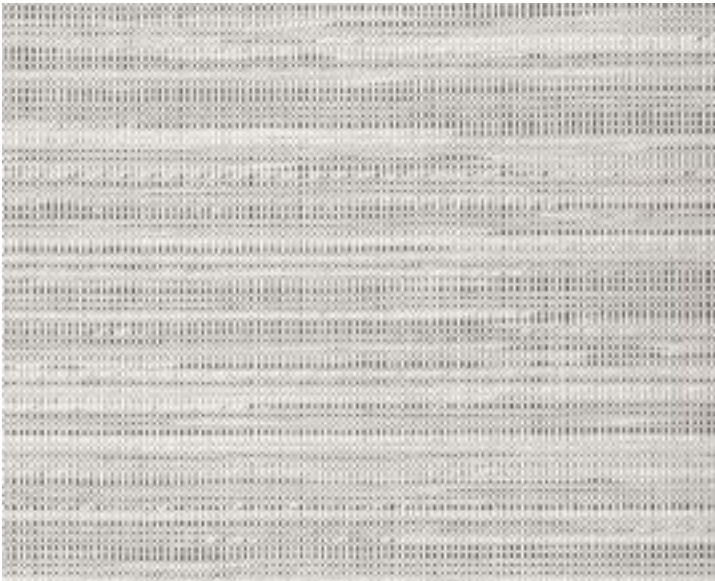
Dash

6603 - 25 📦



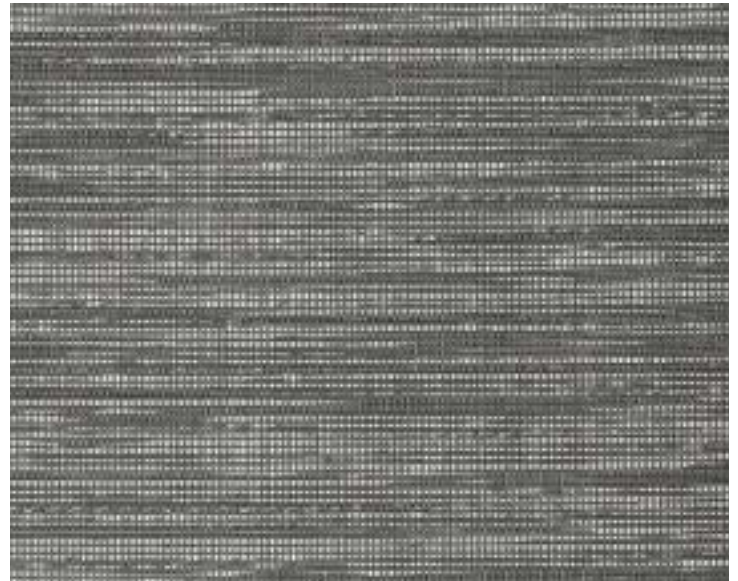
Nexus

6425 - 910 



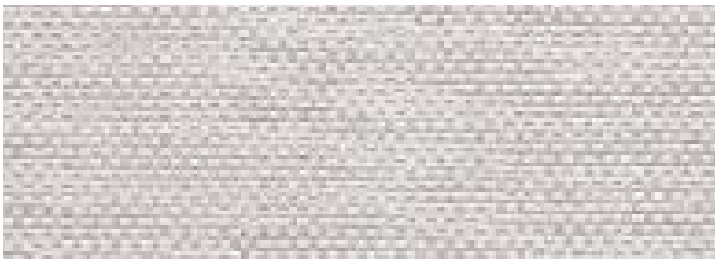
Comet

6033 - 14



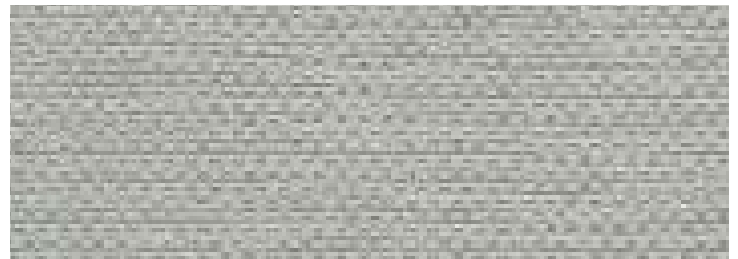
Comet

6033 - 15



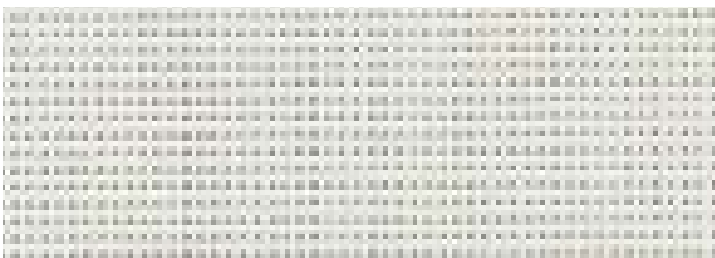
Strie

6423 - 809 



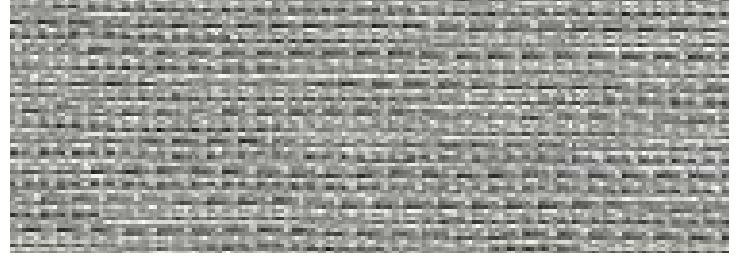
Strie

6423 - 807 



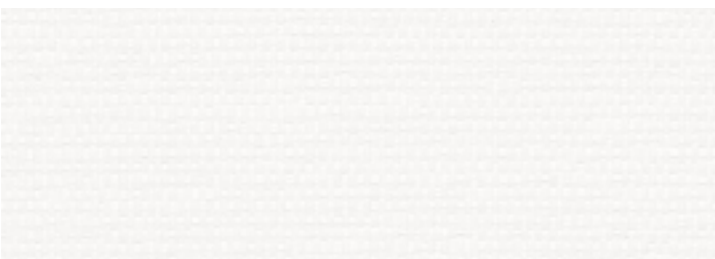
Sahara Matte

6089 - 605




Spire

6269 - 18



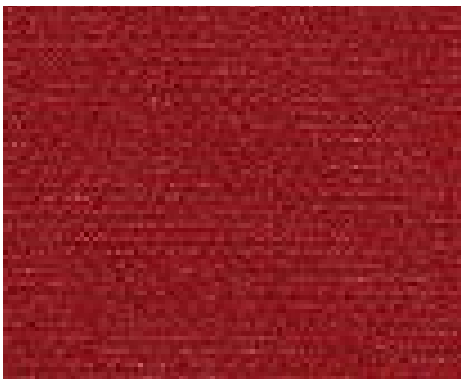
Nexus

6425 - 900 



Meteor

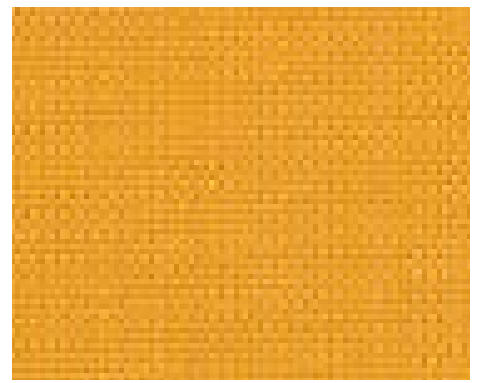
6427 - 769



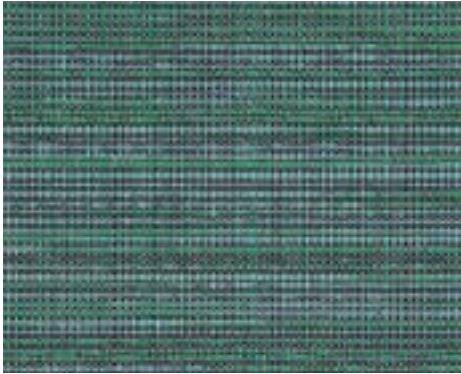
Meteor 6427 - 728



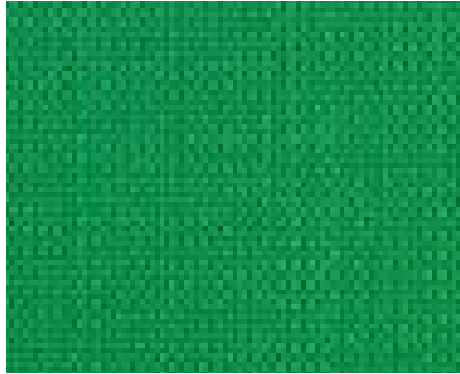
Comet 6033 - 10



Meteor 6427 - 2004



Comet 6033 - 12



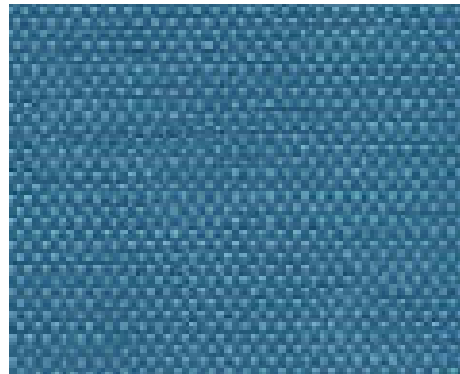
Meteor 6427 - 2010



Comet 6033 - 13



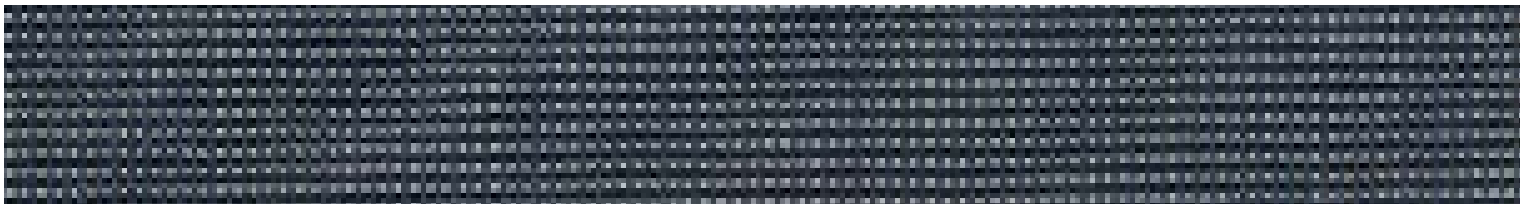
Comet 6033 - 11



Meteor 6427 - 739



Meteor 6427 - 2029



Mojave Matte 6091- 502



Meteor 6427 - 750

DASH	6603	100% Xorel® (65% Biobased PE, 35% PE)
COMET	6033	100% IFR Xorel®
LIMESTONE	6107	100% IFR Xorel®
LINEN	6291	100% IFR Xorel®
METEOR	6427	100% IFR Xorel®
MOJAVE MATTE	6091	100% Xorel® (91% Biobased PE, 9% PE)
NEXUS	6425	100% Xorel® (85% Biobased PE, 15% PE)
SAHARA MATTE	6089	100% Xorel® (91% Biobased PE, 9% PE)
SPIRE	6269	100% Xorel® (65% Biobased PE, 35% PE)
STRIE	6423	100% Xorel® (85% Biobased PE, 15% PE)

FLAME RETARDANCY

ASTM E84 Class A / Class 1, Fabric meets Underwriters Laboratory (UL) 1286 Flammability Requirements for Office Furnishings, FAA 25.853 (a&b), NYC 294-40 SR, NFPA 260 Class 1, California Technical Bulletin 117 - 2013, Canadian ULC S102

ECO INFO

Cradle to Cradle Certified^{CM} Gold (Dash, Mojave Matte, Nexus, Sahara Matte, Spire, Strie)
 Cradle to Cradle Certified^{CM} Silver (Comet, Limestone, Linen, Meteor)
 LEED

SCS Indoor AdvantageTM Gold

USDA Certified Biobased Product (Dash, Mojave Matte, Nexus, Sahara Matte, Spire, Strie)

Free of Antimicrobials, Antimony, Bisphenol A (BPA), Chlorine, DMF, Fluorocarbons, Formaldehyde, Halogenated fire retardants, Heavy metals, Ozone-depleting chemicals, PFC, Phthalates, Plasticizers, PVC, Solvents, Stain resistant finishes

No topical finishes

Antimicrobial, Antibacterial, Safely Disposable, Extremely low VOCs

Biobased content derived from rapidly renewable plant based resources TUV Austria OK biobased - Mojave Matte/Nexus/Sahara Matte/Strie Level 4 (ASTM D6866), Dash/Spire Level 3 (ASTM D6866)

CLEANING CODES

WS & BC - Water / Solvent & Bleach Cleanable

DURABILITY

No wear 1 million double rubs

NOTES

A summary of the results of 65 independent tests on Xorel is available at carnegiefabrics.com

